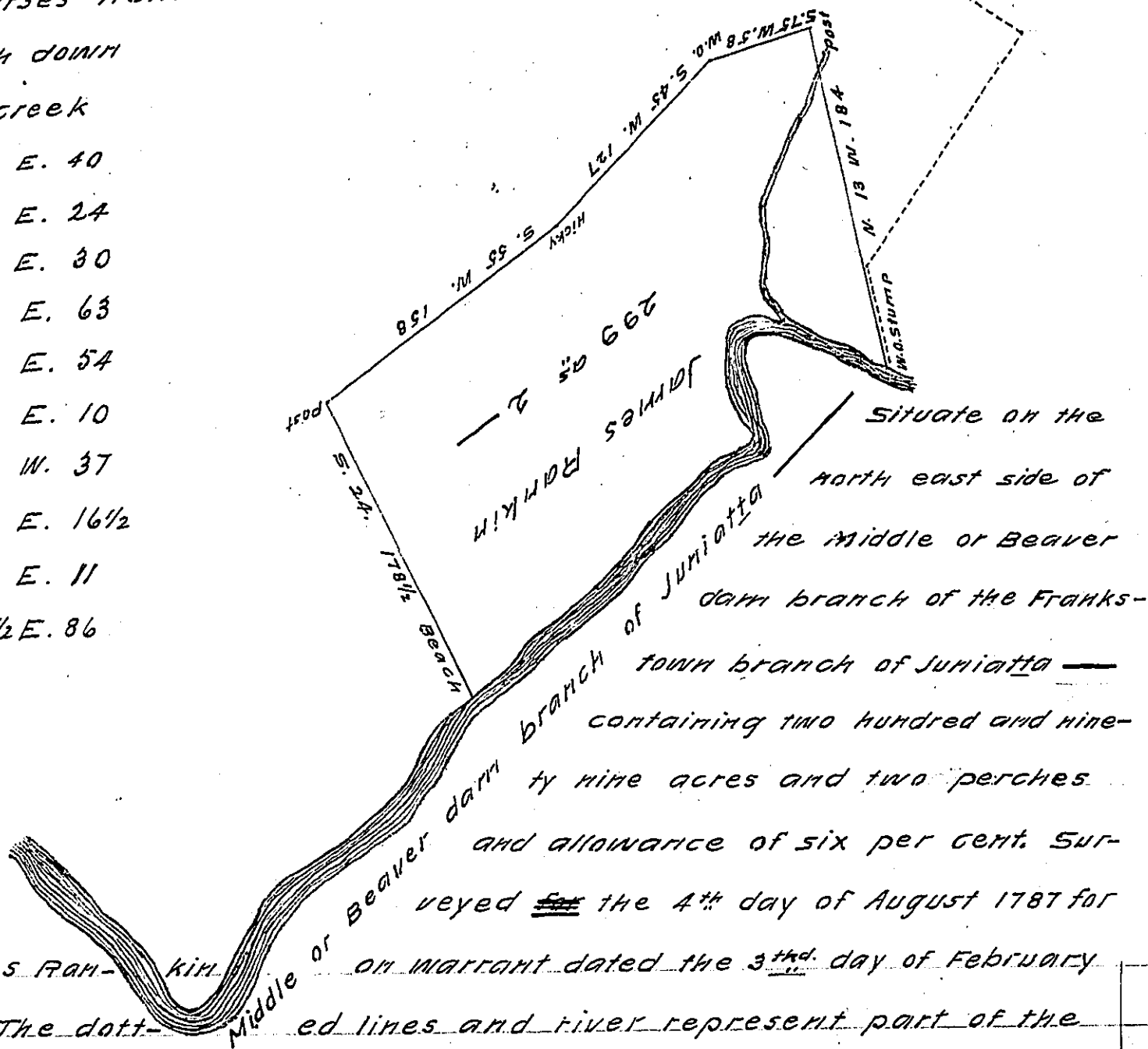


FORM NO 1.

Courses from
 Beach down
 the creek
 N. 50 E. 40
 N. 31 E. 24
 N. 69 E. 30
 N. 40 E. 63
 N. 57 E. 54
 N. 45 E. 10
 N. 12 W. 37
 N. 15 E. 16 1/2
 N. 71 E. 11
 S 70 1/2 E. 86



James Rankin Middle or Beaver dam branch of Juniatta containing two hundred and ninety nine acres and two perches and allowance of six per cent. Surveyed ~~for~~ the 4th day of August 1787 for on warrant dated the 3th day of February 1785. The dotted lines and river represent part of the draught of a tract of land surveyed for Richard Peters, Esqr. on warrant dated the 17th day of March 1762. This tract interferes two hundred and ninety nine acres and two perches with the James Rankin, survey. Richard Peters, conveyed to the honourable Proprietaries who conveyed to Major Harry Borden whose heirs now are in possession by th-ir tenants. John Lamrey who claims under James Rankin, has an ejectment depending in Court for the recovery of said land.

Daniel Africa, D. S.

To Jacob Spangler Esq.

Surveyor General

Richd Peters, patd

IN TESTIMONY that the above is a copy of the original remaining on file in the Department of Internal Affairs of Pennsylvania, made conformably to an Act of Assembly approved the 16th day of February, 1833, I have hereunto set my Hand and caused the Seal of said Department to be affixed at Harrisburg, this twentieth day of August 1908

Henry Howard
 Secretary of Internal Affairs.